



Nature
HISTORY
Discovery

Jessie M. Honeyman

CAMPGROUND



Jessie M. Honeyman Memorial State Park

3 miles S of Florence
84505 Highway 101 S, Florence, OR 97439
541-997-3641



Latitude: 43.929946 N
Longitude: -124.106904 W

Reserve early! Reserve campsites, yurts, picnic shelters, and the meeting hall one day to nine months in advance by calling 1-800-452-5687. Campsites and yurts are also reservable online through www.oregonstateparks.org.

Featuring sparkling freshwater lakes, sandy beaches and towering dunes, Jessie M. Honeyman is Oregon's premier destination for soaking up summer sun.

Year-Round Camping

- 47 full-hookup sites (sewer, electricity, water)
- 121 electrical sites with water
- 187 tent sites with water nearby
- 10 yurts (1 pet-friendly)
- Paved parking, picnic table, and fire ring at all sites
- Six seasonal group tent camping areas
- Hiker/biker camp
- Firewood for sale
- RV dump station

Universal Access

Four campsites (#18, 131, 159, and 372) and two yurts (#28 and 404) are accessible according to the Americans with Disabilities Act.

Sand Dune Day-use Area

- Sand, sand and more sand with natural swimming area (no lifeguard)
- Fishing for native cutthroat trout, largemouth bass and rainbow trout
- Accessible fishing pier
- Sandboard rentals

Cleawox Lake Day-use Area

- Sandy beach with swimming area and diving platform (no lifeguard)
- Reservable shelter on the lake next to ball field
- Historic Cooking shelter and picnic shelter are come, first served
- Pedal boats, canoe, kayak and paddle board rentals
- Historic CCC Bathhouse

Woahink Lake Day-use Areas

- Sandy beach with swimming area (no lifeguard)
- Boat ramp and trailer parking
- Reservable picnic shelter
- Fishing for native cutthroat trout, largemouth bass and rainbow trout
- Reservable meeting hall with lake views (accommodates up to 50)

Smoking in Oregon State Parks is allowed only in personal vehicles, RVs, campsites and portions of day use parks along state highways that are designated as safety rest areas by the Oregon Department of Transportation.

Need to cancel your reservation? Follow these guidelines: If your reservation is for today, call 541-997-3641. Otherwise, call 1-800-452-5687.

Other Amenities

- Welcome Center with bicycle rentals (F loop, near playground)
- Playground with lots of sand
- Amphitheater for evening programs
- Various hiking trails

Camping Rates

Rates are subject to change. You can get up-to-date information by calling 1-800-551-6949 or visiting www.oregonstateparks.org.

Yurts!

Enjoy the year-round comforts of a domed tent with structural support, a wood floor, a lockable wooden door, lights, heat, and beds with vinyl-covered mattresses. A bunk bed sleeps three, and a futon couch sleeps two. A fire ring, a picnic table, and paved parking are right outside. Up to two pets (cats and/or dogs only) are allowed in the pet-friendly yurt for an additional fee.

Dunes North, Dunes South

The park is situated within a 47-mile stretch of dunes from Florence to Coos Bay. Bring your own All-terrain vehicle (ATV), or take a buggy tour offered by commercial operators near the park.

Two miles of dunes separate Honeyman from the shoreline, but no marked trails lead to the beach from the park. From October to April, ATVs can drive directly onto the dunes from H Loop.

The Oregon Dunes National Recreation Area visitor center located 18 miles south in Reedsport has more information. ATVs can also access the dunes from South Jetty road north of the park.

Reminders of the Past

The Bathhouse building is one of several structures built by the Civilian Conservation Corps (CCC) in the 1930s. Others include three kitchen/picnic shelters, the park's administrative building, and stone curbing. All of the buildings are listed on the National Register of Historic Places.

Park Information:

1-800-551-6949
www.oregonstateparks.org

63400-8351 (4/16)

Hiking Through the Park

CCC crews originally developed some of the park's trails, including the half-mile that connects the Cleawox picnic areas and campground. This trail follows portions of the Cleawox and Lily Lake shorelines and features rhododendrons in the spring. Other trails link the campground and the Cleawox day-use area with the park's group camp and Woahink Lake. A highway overpass provides safe crossing for pedestrians and bicyclists.

Celebrate the Rhododendrons

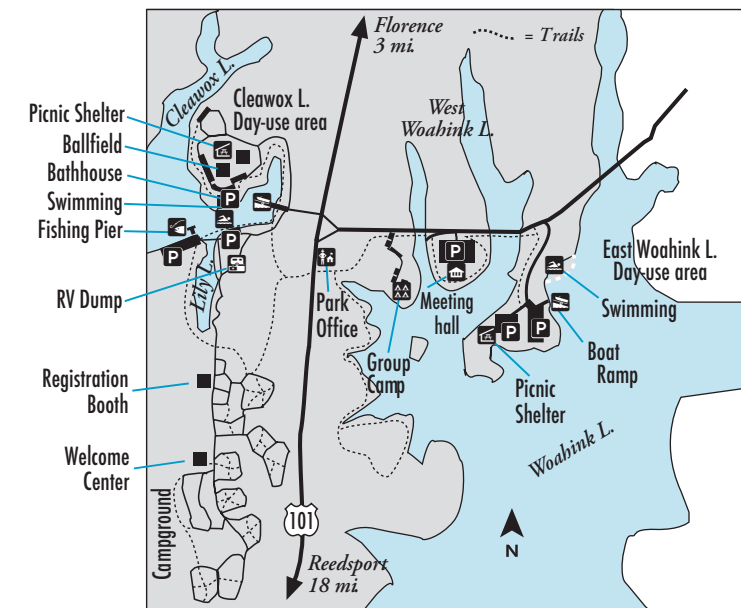
Visit Florence in mid-May during its annual Rhododendron Festival. It's a great time to camp at Honeyman, with bushes blooming almost everywhere.

Day-use Area Parking Fees

In the Cleawox day-use area and all other areas in the park west of Highway 101, a daily parking permit is required year-round. An Oregon Pacific Coast Passport, a valid camping receipt, or a 12- or -24-month Oregon State Parks parking permit are accepted. Purchase daily permits at the park and annual permits at store.oregonstateparks.org or major state park offices.



Western snowy plovers nest along some parts of the Oregon coast. Watch for special signs during nesting season.



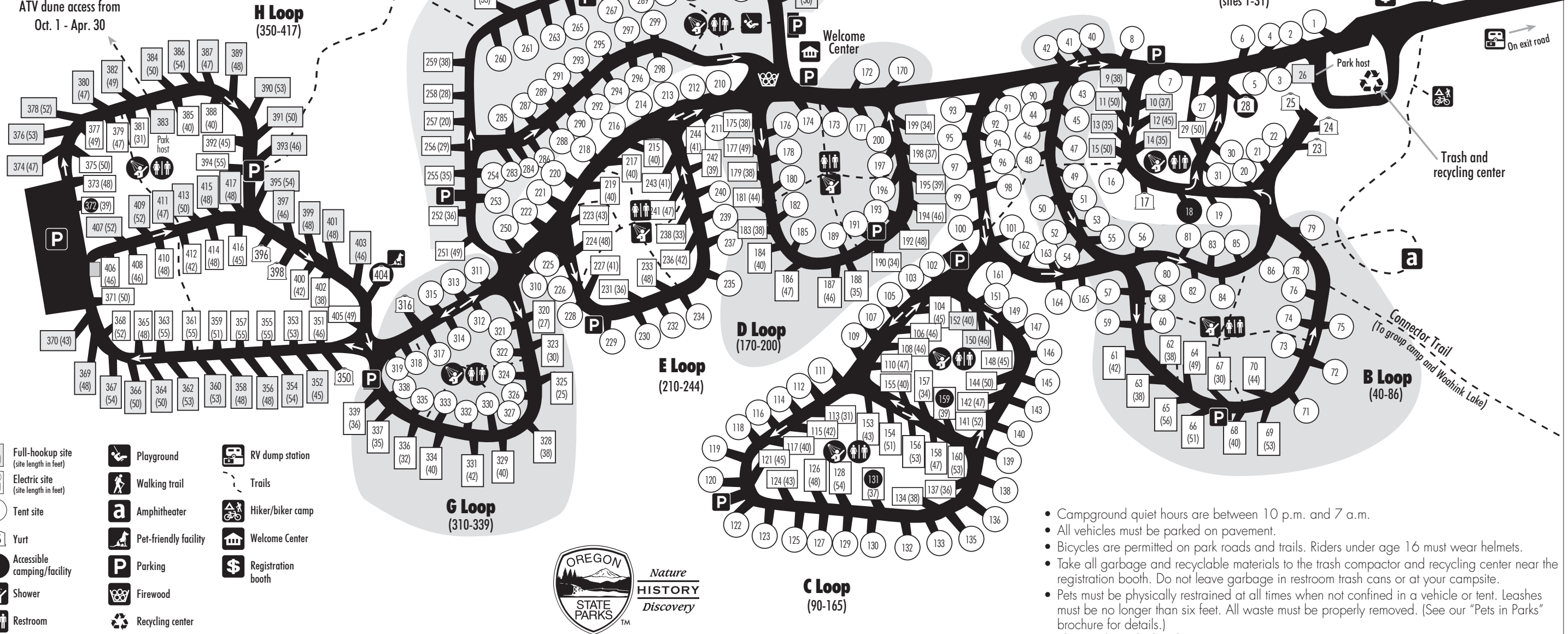
Jessie M. Honeyman Memorial State Park

To dunes
(no trails to ocean beach)

To dunes



ATV dune access from
Oct. 1 - Apr. 30



- Campground quiet hours are between 10 p.m. and 7 a.m.
- All vehicles must be parked on pavement.
- Bicycles are permitted on park roads and trails. Riders under age 16 must wear helmets.
- Take all garbage and recyclable materials to the trash compactor and recycling center near the registration booth. Do not leave garbage in restroom trash cans or at your campsite.
- Pets must be physically restrained at all times when not confined in a vehicle or tent. Leashes must be no longer than six feet. All waste must be properly removed. (See our "Pets in Parks" brochure for details.)
- **Play it safe on the beach!** Stay off logs, know the tide schedule, and don't turn your back on the ocean.

Check-in after 4 p.m., **Check-out** by 1 p.m.

All information or fees subject to change without notice. This brochure is available in alternative formats upon request.
Call 1-800-551-6949. Oregon Relay for the hearing impaired: dial 711.