

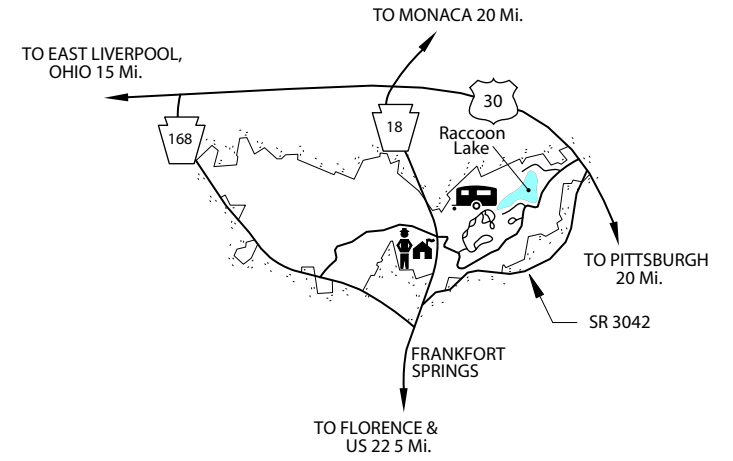
RACCOON CREEK STATE PARK
 3000 State Route 18
 Hookstown, PA 15050-1605
 Phone: 724-899-2200
 e-mail: raccooncreeksp@state.pa.us

Make online Reservations at
www.pa.reserveworld.com
 or call toll-free 888-PA-PARKS

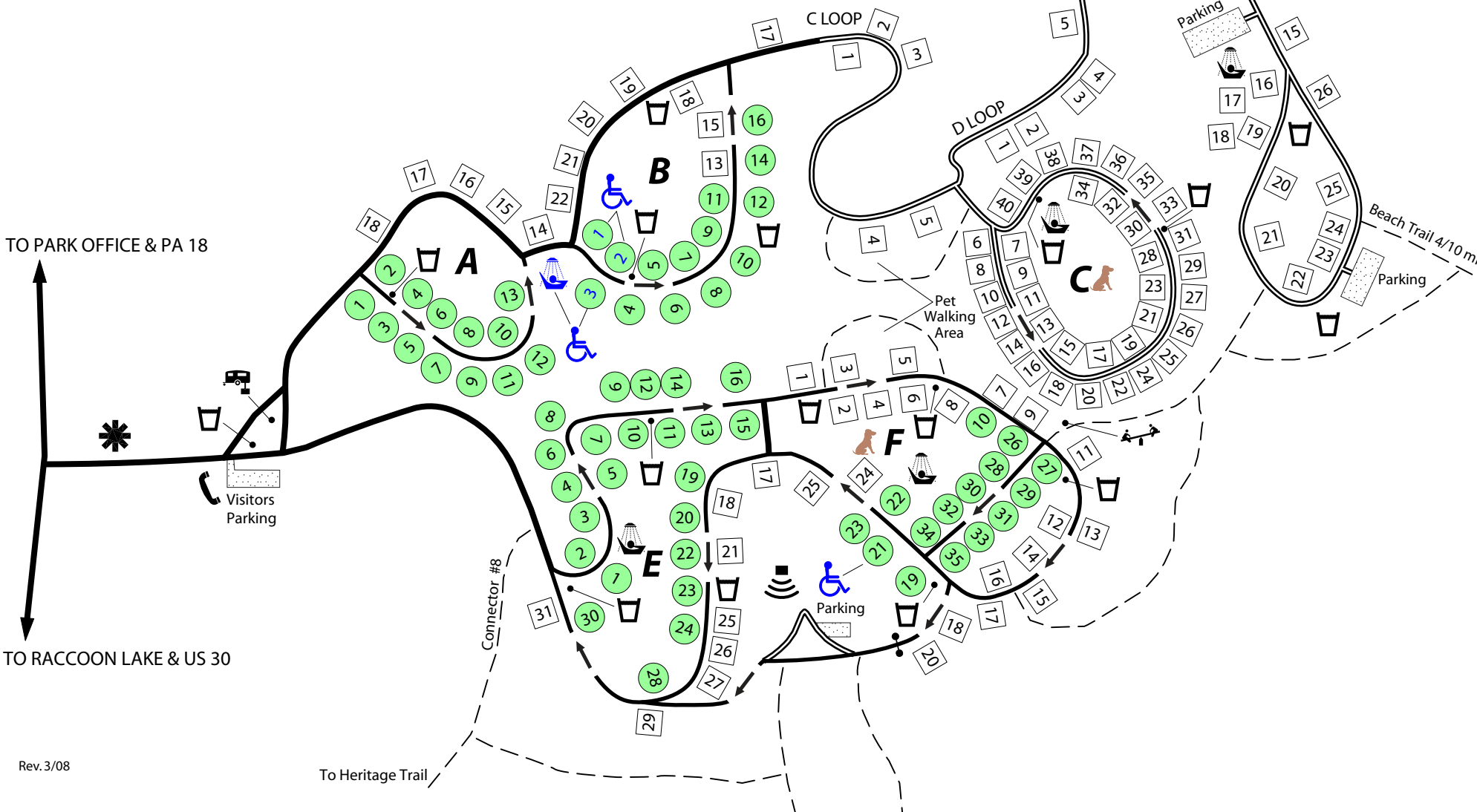
Campground is open from the second week
 in April thru the third weekend in October.

EQUIPMENT ACCOMMODATION GUIDE

Camping Pad Length Ranges From	20' to 78'
--------------------------------	------------



CAMPING AREA LOCATION



LEGEND

- Park Office
- Contact Station
- Gate
- Showerhouse/Restrooms
- Amphitheater/Chapel
- Public Phone
- Playground
- Camping Area
- Sanitary Dump Station
- Water
- Accessible
- F-Loop & C-Loop Pet Camp Sites
- Non-electric Site
- Electric Site-50 AMP

Raccoon Creek State Park

On a plateau above Raccoon Lake, the campground offers 172-forested campsites each with a picnic table and fire ring. Trailer and tent camping sites are available in A, B, C, E and F loops. A, B, E and F loops have paved spurs with sixty-five of these sites offering up to 50 amp electrical hookups. D loop is tent camping only. The campground has modern restrooms and showers. A playground is available near the F loop.

Pets

Pets are permitted at designated campsites in this campground. Please contact the park office or contact station for guidelines for pets.

Pets are prohibited in swimming areas and all overnight areas, except the campgrounds involved in the pet program. Guide dogs or other dogs that assist people with disabilities and are controlled by the use of a harness or other restraint are not considered pets.

Camping Season

This campground opens in April and closes in October.

Reserving a Site

Most campsites in Pennsylvania state parks can be reserved 11 months in advance to noon of the day of arrival. Campers without a reservation arriving after noon should check at the contact station or near the campground entrance for instructions.

Reservations can be made using MasterCard, VISA, American Express and Discover credit cards or personal, traveler's and cashier's checks. To receive a confirmed reservation, full payment must be received by the Bureau within ten days of making the reservation.

To reserve a campsite, visit www.visitPAparks.com, or call 888-PA-PARKS (888-727-2757), Monday to Saturday, 7 a.m. to 5 p.m. except on the Thanksgiving Day, Christmas Day, New Year's Day and Birthday of Martin Luther King, Jr. holidays.

Campsite Issuing

Advance reservations are available for almost all campsites. Unreserved sites are available on a first-come, first-served basis. If an employee is not available, read posted instructions and check the "After Hours Posting Report" then proceed to an available site and set up.

The appropriate fee must be paid to a park

employee or deposited in a supplied honor system envelope before setting up on a campsite.

Cancellations and Transfers

Changes to an online reservation must be made by calling the Pennsylvania State Parks Reservation Center at 888-PA-PARKS, Monday through Saturday, 7 a.m. to 5 p.m. Eastern Time.

Cancellations can be handled via the Internet under "My Account" or by calling the call center. Cancellations made up to the close of business seven days prior to your scheduled arrival date will incur a \$10 cancellation fee. If you cancel six days or less prior to the arrival date, you will forfeit the first night's fee or \$75, whichever is the lesser amount. There is a \$10 fee assessed for all changes made to your reservation, except adding nights to the reservation. Changes to a reservation can be made at the call center, but not via the Internet. Any cancellation or change on the day of arrival must be made through the state park that you have the reservation with.

Access for People with Disabilities

If you need an accommodation to participate in park activities due to a disability, please contact the park you plan to visit.

Protect and Preserve Our Campgrounds

Please be familiar with all state park rules and especially the following rules and regulations.

Maximum Camping Period

Campers may stay in a state park campground for up to 14 consecutive nights from Memorial Day to Labor Day. Campers may camp for 21 consecutive nights during the remainder of the year.

Maximum Number of People Per Site

Site occupancy is limited to one family unit (persons living under one household) or one non-family unit limited to five persons per site. Anyone renting a campsite must be 18 years of age or older and must be present at the campsite.

Motor Vehicles

Only one car per campsite is allowed unless otherwise posted. Park only in designated areas.

Alcoholic Beverages

Alcoholic beverages are prohibited in all Pennsylvania state parks.

Check-in/Check-out Time

Check-in time is 3 p.m. Campsites must be vacated by 3 p.m. Camping cottages and yurts must be vacated by 10 a.m.

Visitors, Quiet Hours and Noise

Visitors are welcome to campsites from 8 a.m. to 10 p.m. Campers must not disturb the sleep of others between 9 p.m. and 8 a.m. Electric generators that create excessive noise are prohibited.

Fires

Fires are permitted only in provided fireplaces or grills. Gas and propane camp stoves are permitted. Please be careful with fire. Fires must be attended at all times and extinguished before leaving the campsite.

Firewood

Firewood is not provided. Cutting live trees or standing trees and the operation of chainsaws are prohibited.

Firewood Advisory

Firewood may contain non-native insects and plant diseases. Bringing firewood into the park from other areas may accidentally spread pest insects and diseases that threaten park resources and the health of our forests. Campers should use local firewood. Do not take wood home and do not leave firewood - Burn It!

Handwashing

Handwashing and dishwashing are permitted only where appropriate facilities are available. Handwashing and dishwashing are prohibited at water spigots, hand pumps, springs, lakes and streams.

Hunting

Firearms and archery equipment used for hunting may be uncased and ready for use only in authorized hunting areas during hunting seasons. In areas not open to hunting or during non-hunting seasons, firearms and archery equipment shall be kept in the owner's car, trailer or leased campsite. The only exception is that law enforcement officers and individuals with a valid *Pennsylvania License to Carry Firearms* may carry said firearm concealed on their person while they are within the park.

Raccoon Creek State Park



Modern Camping



Raccoon Creek State Park

3000 State Route 18

Hookstown, PA 15050-1605

724-899-2200

e-mail: raccooncreeksp@state.pa.us

www.visitPAparks.com



pennsylvania
DEPARTMENT OF CONSERVATION
AND NATURAL RESOURCES