



Woodbury County Conservation Dept.

4500 Sioux River Road, Sioux City, Iowa 51109
 Phone: 712-258-0838
 www.woodburyparks.com



95°49'30"W 95°49'0"W 95°48'30"W 95°48'0"W 95°47'30"W 95°47'0"W

42°28'0"N

42°27'30"N

42°27'0"N

42°26'30"N

42°28'0"N

42°27'30"N

42°27'0"N

42°26'30"N

Area Information

Acres: 609

Habitat: 1/2 Timber, 1/4 Upland, 1/8 Marsh, 1/8 Water

Usage: Multi-use including Hiking, Biking, Swimming, Camping, Fishing, Restricted Area Hunting, Shooting Range, Picnicking, Canoeing, Bird Watching

Species: Deer, Pheasant, Squirrel, Rabbit, Waterfowl

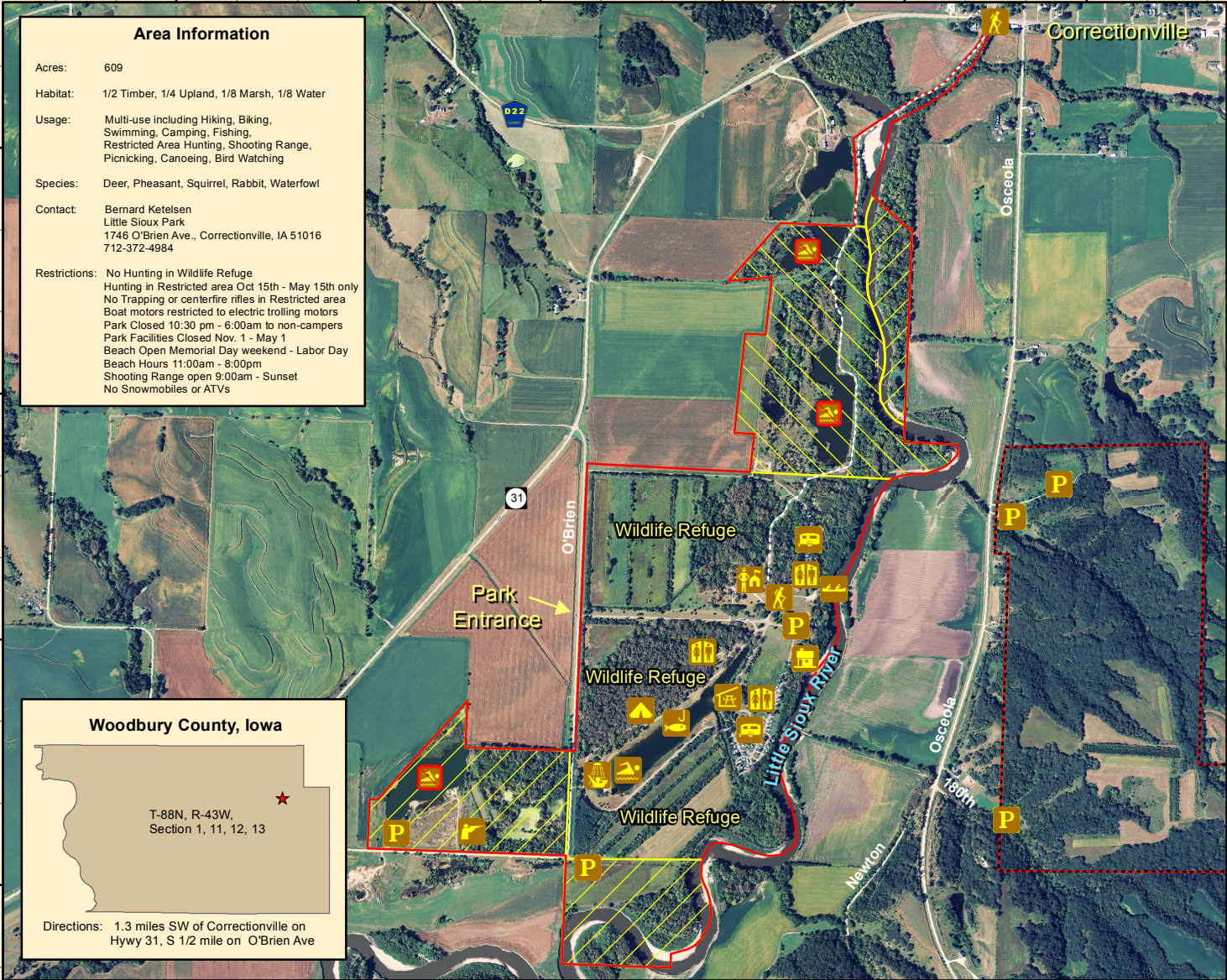
Contact: Bernard Ketelsen
 Little Sioux Park
 1746 O'Brien Ave., Correctionville, IA 51016
 712-372-4984

Restrictions: No Hunting in Wildlife Refuge
 Hunting in Restricted area Oct 15th - May 15th only
 No Trapping or centerfire rifles in Restricted area
 Boat motors restricted to electric trolling motors
 Park Closed 10:30 pm - 6:00am to non-campers
 Park Facilities Closed Nov. 1 - May 1
 Beach Open Memorial Day weekend - Labor Day
 Beach Hours 11:00am - 8:00pm
 Shooting Range open 9:00am - Sunset
 No Snowmobiles or ATVs

Woodbury County, Iowa

T-88N, R-43W,
 Section 1, 11, 12, 13

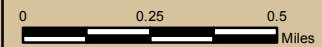
Directions: 1.3 miles SW of Correctionville on Hywy 31, S 1/2 mile on O'Brien Ave



Legend

- | | | | | | |
|--------------------|-----------------------------|-------------------|------------|----------------|----------------|
| No Swimming | Rental Cabins | Modern Camping | Restrooms | Beach Shower | Rental Shelter |
| Union Bridge Trail | Hunting Area | Primitive Camping | Trail Head | Swimming | Ranger Station |
| Little Sioux Park | Restricted Use Hunting Area | Fishing | Canoeing | Shooting Range | Parking |
| Shagbark Hills | | | | | |

Little Sioux Park



Aerial Photo - Summer, 2010
 Map Creation Date: 1/2011

Disclaimer: Information and boundaries depicted on this map have been carefully reviewed. However, this data is not guaranteed to be free of errors or inaccuracies as provided by Woodbury County or other providers and sources of data contained in this map. Boundary signs have been placed on our areas to ensure users do not trespass on private property.